



ISCC PLUS Certificate

Certificate Number: ISCC-PLUS-Cert-IT206-728

RINA Services S.p.A.
Via Corsica, 12 16128 Genova ITALY

certifies that

GOLD PLAST S.p.A.

Via Cesare Battisti 3 - 21045 Gazzado Schianno (VA) ITALY

complies with the requirements of the certification system

ISCC-PLUS

(International Sustainability and Carbon Certification)

Place of the audit

(if different from the legal address of the system user as stated above; only applicable for traders and traders with storage):

n.a.

This certificate is valid from 07.06.2023 to 06.06.2024

The site of the system user is certified as:

Trader

Genova, 07.06.2023

Place and date of issue

Laura Severino

Climate Neutrality & Chain of Custody
Sustainability Strategic Centre, Head

Stamp, Signature of issuing party



ISCC PLUS Certificate

Certificate Number: ISCC-PLUS-Cert-IT206-751

RINA Services S.p.A.
Via Corsica, 12 16128 Genova ITALY

certifies that

GOLD PLAST PRODUCTION SRL

STR.GARII, NR.1 Topoloveni (AG) ROMANIA

complies with the requirements of the certification system

ISCC-PLUS

(International Sustainability and Carbon Certification)

Place of the audit

(if different from the legal address of the system user as stated above; only applicable for traders and traders with storage):

n.a.

This certificate is valid from 21.06.2023 to 20.06.2024

The site of the system user is certified as:

Converter

The scope of the certificate includes the following chain of custody options:

Mass balance

Genova, 21.06.2023

Place and date of issue

Laura Severino

Climate Neutrality & Chain of Custody
Sustainability Strategic Centre, Head

Stamp, Signature of issuing party



Annex to the certificate:

Sustainable materials handled by the certified site

(This annex is only applicable for material handled under the scopes: farm/plantation, point of origin, central office, (farm/plantation or point of origin) first gathering point, processing unit (any type) but **not** for material that is only traded and/or stored)

This annex is only valid in connection with the certificate:

ISCC-PLUS-Cert-IT206-751 issued on 21.06.2023

Input material	Output material	Add-ons (voluntary) ¹⁾	ISCC waste process applied ²⁾	SAI/ FSA ³⁾	FEFAC ⁴⁾
Circular Copolyesters	Plastic Components (Copolyesters)	-	Yes	N.A.	N.A.
¹⁾ ISCC PLUS add-ons (voluntary application, see www.iscc-system.org for further information): <ul style="list-style-type: none"> • 202-03: SAI Gold • 205-01: GHG emission requirements • 205-02: Consumables • 205-03: Non GMO for food and feed • 205-04: Non GMO for technical markets 					
²⁾ Yes: The raw material meets the ISCC definition of waste or residue, i.e. it was not intentionally produced and not intentionally modified, or contaminated, or discarded, to meet the definition of waste or residue No: The raw material complies with the ISCC Principles 1 – 6 for the cultivation of sustainable biomass					
³⁾ Farm Sustainability Assessment (FSA) was developed by the Sustainable Agriculture Initiative (SAI) SAI Silver Compliance: ISCC Compliant material can be claimed as “Equivalent to FSA 2.1 Silver” SAI Gold Compliance: ISCC Compliant material incl. add-on SAI Gold can be claimed as “Equivalent to FSA 2.1 Gold”					
⁴⁾ FEFAC: European Feed Manufacturers’ Federation. ISCC compliant materials can be claimed as “in line with FEFAC soy sourcing guidelines 2015”					



ISCC PLUS for the Circular Economy and Bioeconomy

ISCC System GmbH

March 2023

Positive impact of ISCC PLUS



Recycling plastics helps to solve the plastic waste problem

Bio-based plastics reduce the dependency on fossil fuels

Recycled and bio-based plastics support the transition to a circular economy and bioeconomy

ISCC Key Pillars



Traceability throughout
the supply chain



Feedstock identity



Well defined and third-party
verified claims



No deforestation



Transparent rules for mass balancing
and physical segregation



Multi-stakeholder approach with
a continuous dialogue



Protection of biodiversity and
high carbon stock areas

Examples of ISCC PLUS certified feedstocks



Bio



Corn



Canola



Sugarcane



Cotton



Bio-circular



Tall Oil



UCO



Forestry residues



Straw



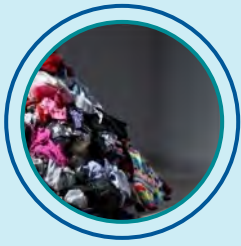
Circular (technical)



Mixed Plastic Waste



End-of-life tires



Waste textiles



CO₂
(post-industrial)

Renewable



Hydrogen



Power-to-X

ISCC Sustainability Principles: Agriculture and Forest Biomass



Principle 1
Protection of
biodiverse and
carbon rich areas



Principle 2
Good Agricultural
Practice and
Sustainable Forest
Management



Principle 3
Safe Working
Conditions



Principle 4
Compliance with
Human, Labour and
Land rights



Principle 5
Compliance with
Laws and
International Treaties



Principle 6
Good Management
Practices and
continuous
Improvement



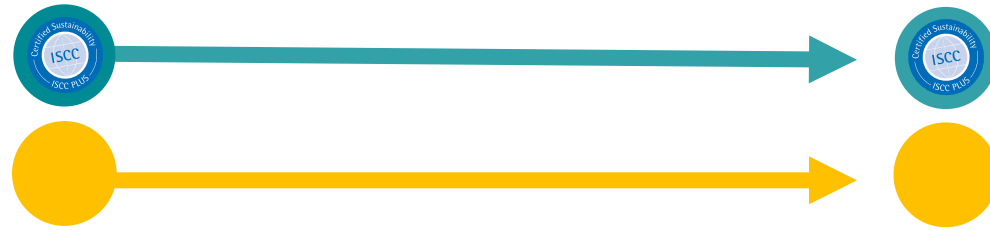
GHG emissions under ISCC PLUS

Companies can integrate their carbon footprint by applying the “GHG Emissions” Add-on.

The calculation methodology is stated in the ‘ISCC EU 205 Greenhouse Gas Emissions’ and ‘ISCC PLUS’ system documents.

ISCC certifies different chain-of-custody approaches and creates transparency on the approach chosen

Physical Segregation



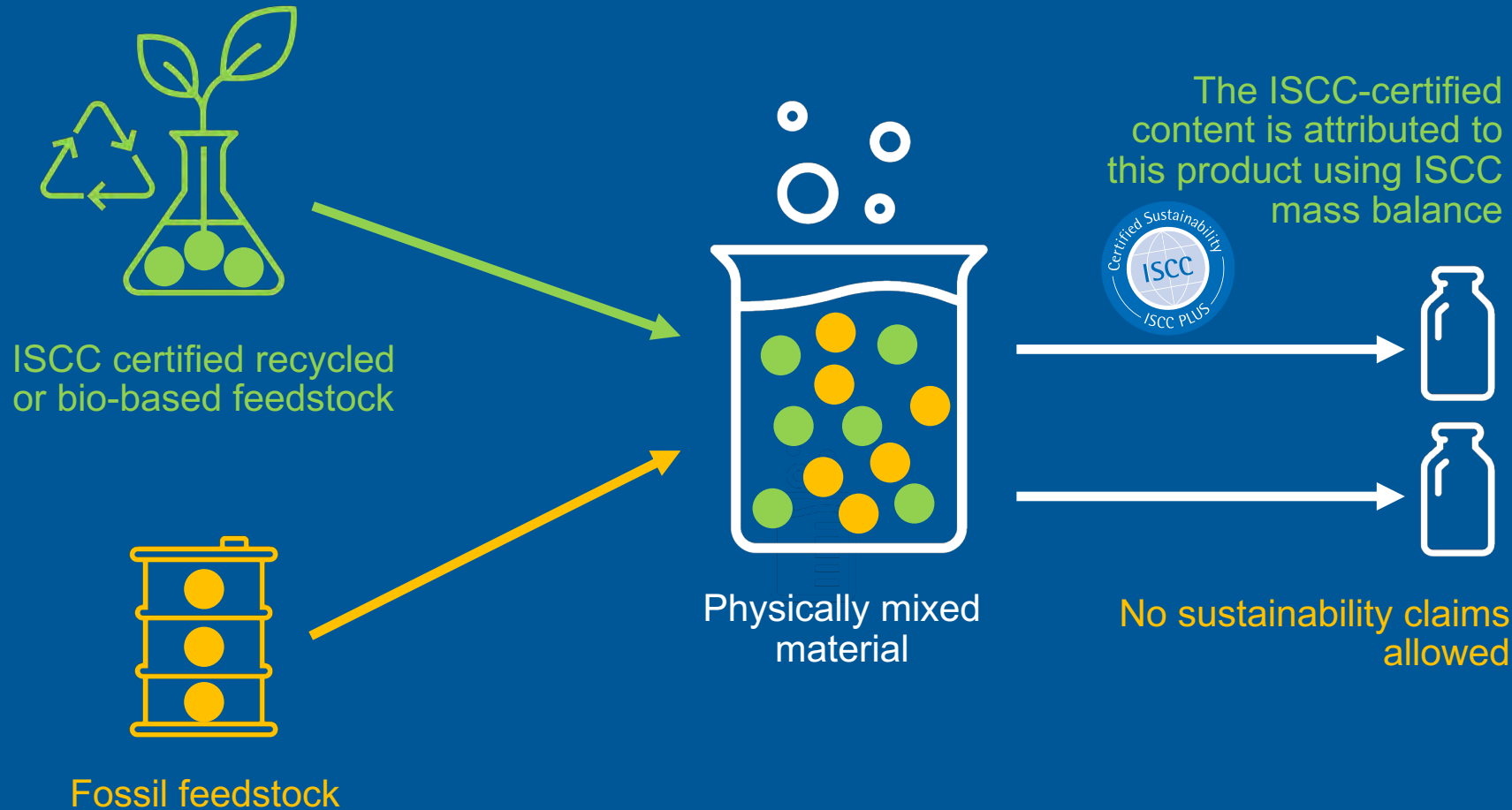
Controlled Blending



Mass Balance



ISCC supports mass balance accounting



Mass balancing is a method to document and track recycled/bio-based content through complex manufacturing systems.

By using mass balance, companies can track how much recycled/bio-based material has been used in their manufacturing systems and balance it out exactly with the certified content in the end products.

Basic requirements for mass balancing under ISCC

Mass balance is site specific



Max. 3 months long period

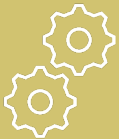


Must not be negative at the end



Pre-requisite

Conversion factor based on operational data



Chemically/technically possible



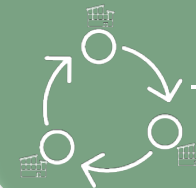
Output must not be higher than input in a MB period



Feasibility

Sustainability Declaration

Indication of multi-site credit transfer – if used



Indication of used MB option



Traceability

Agricultural feedstocks and agricultural crop residues SIMPLIFIED



Waste and processing residues SIMPLIFIED



Sustainable products can be tracked back step by step



Self-Declaration



Sustainability Declaration

ISCC Logos and claims

The ISCC Corporate logo is available for ISCC system users holding a valid ISCC certificate, valid licensees, members of the ISCC association and certification bodies. It may be used for all off-product applications, e.g. on marketing materials, websites, sustainability reports, sustainability declarations, corporate materials, and in email signatures, but never on products.



ISCC Logos and claims

On product logo(s) depend on the type of raw material category and chain of custody option



ISCC Logos and claims

Here are some examples of possible claims under ISCC:

Physical segregation:

- This product is based on sustainable certified raw materials
- This product is made from certified raw material based on the ISCC sustainability requirements
- This product is made from ISCC-certified sustainable feedstock/raw material

ISCC Logos and claims

Here are some examples of possible claims under ISCC:

Mass balance:

- By using ISCC certified recycled plastics, this product contributes to the circular economy
- We replaced virgin fossil resources with recycled material during the production of this product (via the ISCC mass balance approach)
- The production of this bottle supports the recycling of plastic by using the ISCC mass balance approach

ISCC PLUS requirements are in line with important initiatives

Ellen McArthur Foundation White Paper (2019)



Plastics Europe Industry View Paper (2020)



American Chemistry Council Mass Balance Certification Principles for Advanced Recycling (2020)



Position Paper cefic (2020)



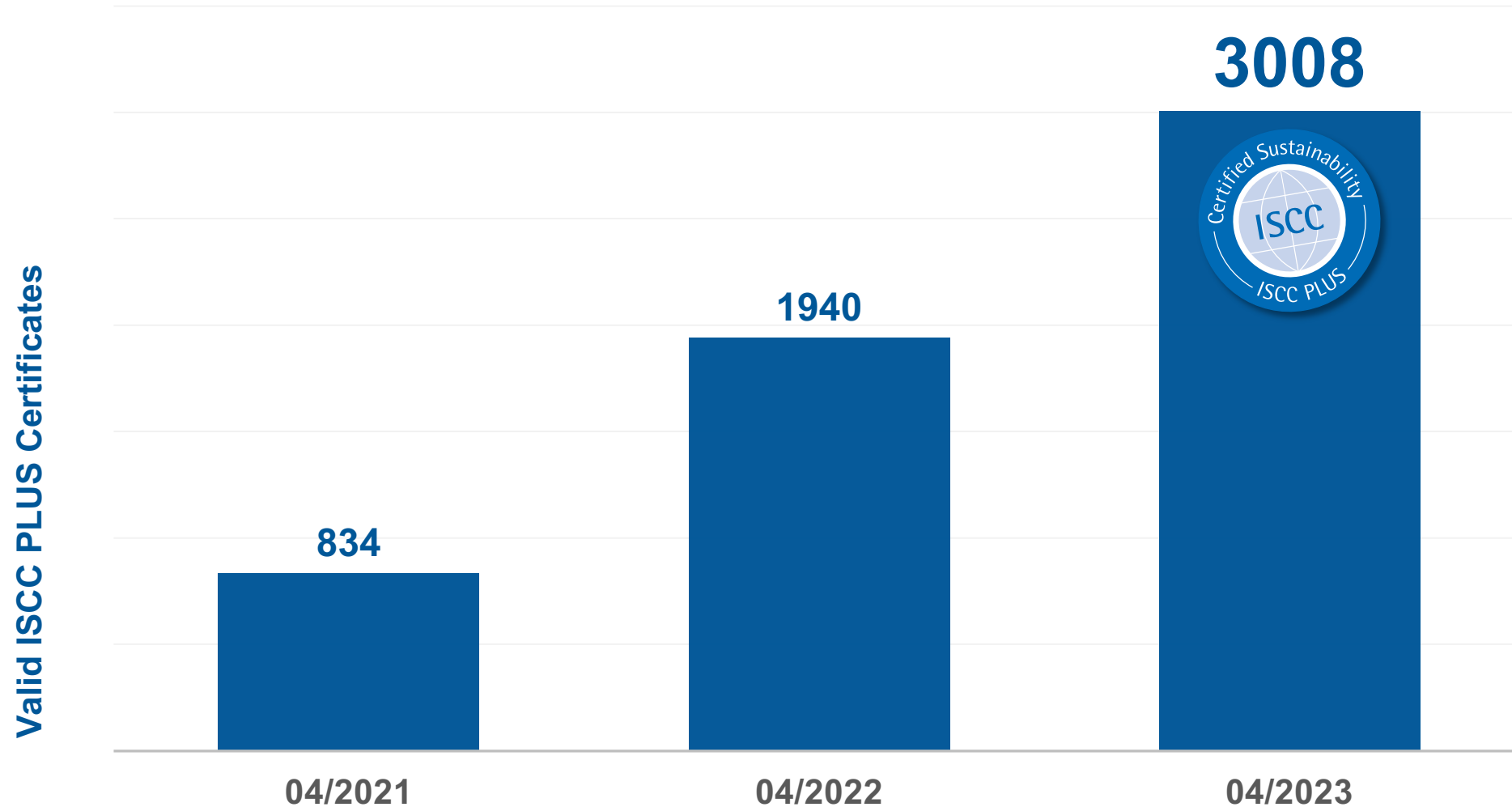
ISCC puts significant emphasis on stakeholder dialogue



Many companies rely on the credibility of the ISCC PLUS certification system



The number of ISCC PLUS certificates continues to increase





An ISCC PLUS certification adds value for consumers



Third-party certification is an effective and proven way for brands to increase consumer trust

→ A study from 2018 showed that third-party certification labels as signaling instruments effectively reduce the risk of poorer performance and positively affect consumers' purchase intentions for sustainable products if the label is viewed as credible.¹



Greenwashing allegations can be avoided - Claims are credible and trustworthy with ISCC PLUS certification

¹ Brach, S., Walsh, G. and Shaw, D. (2018). Sustainable consumption and third-party certification labels: Consumers' perceptions and reactions. *European Management Journal* 36, 254 - 265



More and more brand owners become ISCC certified or ISCC licensed

Examples

*** Swedish Match.



Beiersdorf



DELIZIO



KraftHeinz

Tupperware

Hpm

FRONERI



With the licensing scheme, brand owners can apply the on-product logos more easily

All licensees and their products appear in the [license database](#):

ISCC License Database

Please find a list of all ISCC licensees below. Expired licenses are marked in red. The license is crossed out if a license was withdrawn. From the date of publication on the website, the license agreement is valid and ISCC logos and claims can be applied by the licensee upon prior approval by ISCC.

Search:

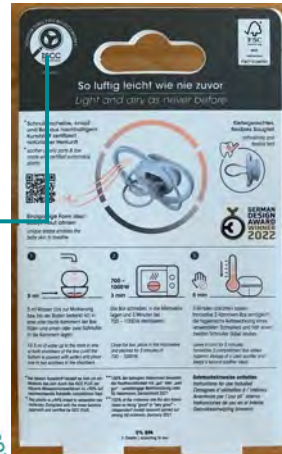
Status	Product name	Product or Packaging	Licensee	License number	Countries/Region	Valid from
	Aino Ice Cream Tubs, 900ml	Packaging	Froneri Finland Oy	ISCC-L-1	Finland	2021-08-31
	Global Protection Day Cream, 50ml	Packaging	REN Clean Skincare	ISCC-L-3	Worldwide	2021-09-09
	Evercalm Gentle Cleansing Milk Sample, 50ml	Packaging	REN Clean Skincare	ISCC-L-3	Worldwide	2021-09-09
	Glow Daily Vit C, 50ml	Packaging	REN Clean Skincare	ISCC-L-3	Worldwide	2021-09-09
	Bioretinoid Cream, 50ml	Packaging	REN Clean Skincare	ISCC-L-3	Worldwide	2021-09-09
	Radiance Dark Circle Eye Cream, 15ml	Packaging	REN Clean Skincare	ISCC-L-3	Worldwide	2021-09-09
	XRRange (XR), Medium Can	Packaging	Swedish Match	ISCC-L-4	Worldwide	2021-09-23
	ZYN, Medium Can	Packaging	Swedish Match	ISCC-L-4	Worldwide	2021-09-23
	ZYN, Large Can	Packaging	Swedish Match	ISCC-L-4	Worldwide	2021-09-23



More and more brand owners are using the ISCC logo on products



The cap and hood of this bottle is made with 100% bio-based plastic. The plastic can be traced back to biological waste material which is attributed to this bottle via the ISCC mass balance approach.



Value created by ISCC PLUS certification



An underwater photograph of a sea turtle swimming over a vibrant coral reef. The water is clear and blue, with sunlight filtering through the surface, creating shimmering patterns. The turtle is the central focus, moving from the upper left towards the lower right. Its shell is a mix of brown and green, with distinct scutes. The coral reef below is diverse, with various shapes and colors, including some large, rounded coral heads.

**Come and join us
on the way to
support a
sustainable
future!**



ISCC

International Sustainability
& Carbon Certification



Thank you!

ISCC System GmbH

Hohenzollernring 72, 50672 Cologne, Germany

www.iscc-system.org

